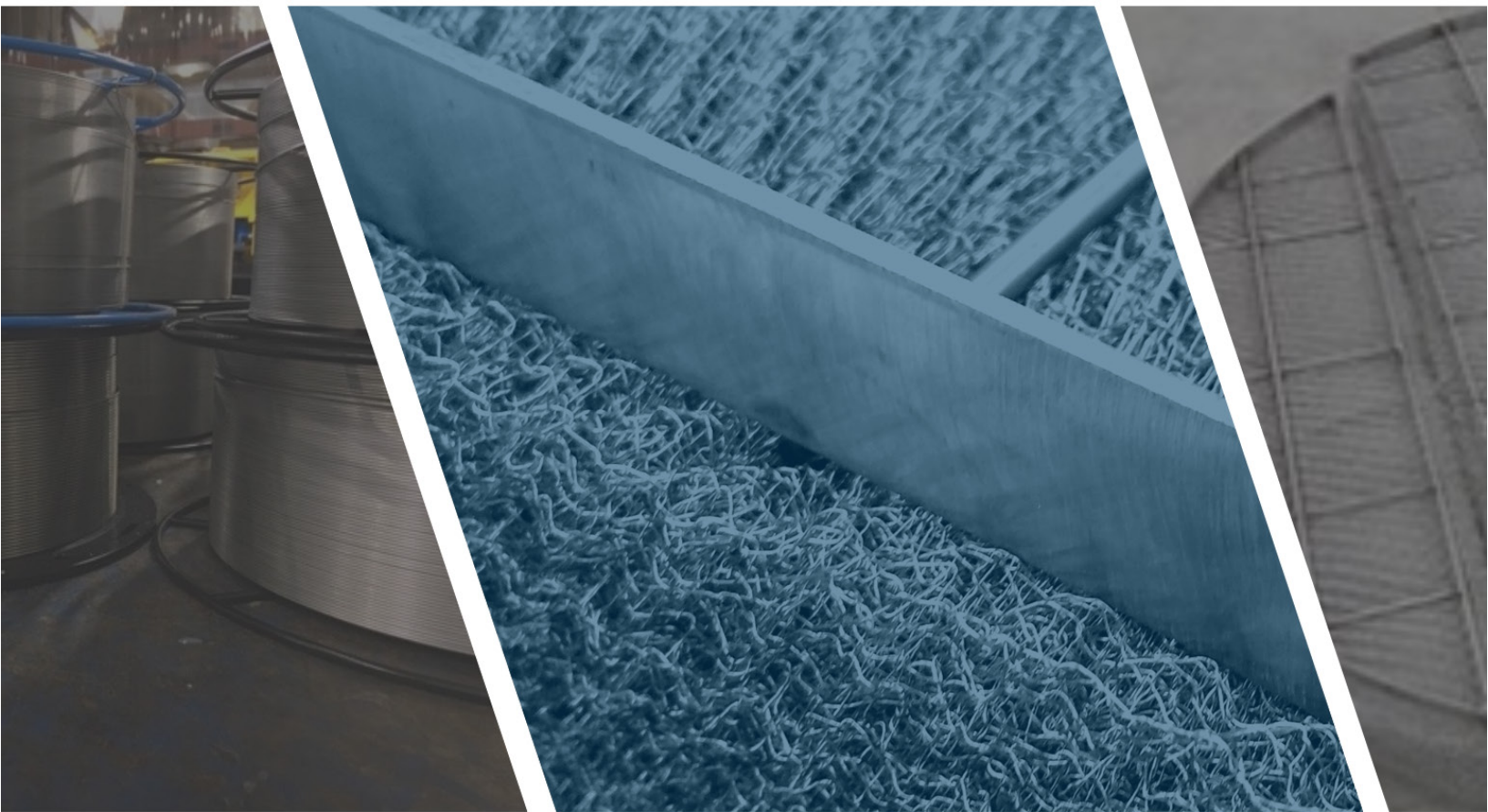


**CWI** CENTRAL WIRE INDUSTRIES

# Tech-Mesh & Welding Products

---



[www.centralwire.com](http://www.centralwire.com) | [sales@centralwire.com](mailto:sales@centralwire.com) | 1-800-325-5861

# PRODUCT LINES

---



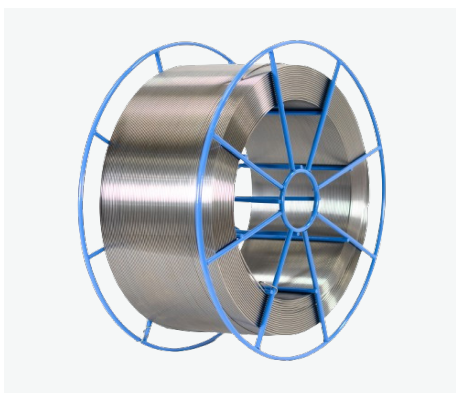
## CUSTOM DEMISTER PADS

Custom Mist Eliminators manufactured to your wire grades, diameters, alloys, mesh densities, and product geometries.



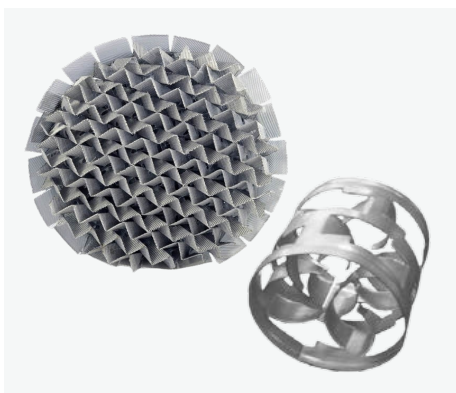
## KNITTED WIRE MESH

Bulk Knitted Wire Mesh in a wide selection of alloys and mesh densities, ensuring you receive the exact material you need time and time again.



## WELDING WIRE

Welding Wire available in a variety of Stainless Steel, Nickel, and Copper Alloys to meet all of your welding requirements, regardless of application.



## STRUCTURED AND RANDOM PACKING

Premium Packing Solutions engineered for superior performance in mass transfer applications, offering optimal pressure drop and efficiency, as well as durability.

# INDUSTRIES WE SERVE

---

CWI's Tech-Mesh™ and Welding Wire product lines are used across a variety of industries, for filtration, mass transfer, and repair applications. Here are just a few industries where our custom products can solve the issues your various projects present.

## OIL & GAS

Our Tech-Mesh™ line is a star of the Oil and Gas Industry. Filtration, separation and mass transfer are made easy and efficient with our Custom Demister Pads, Knitted Wire Mesh and Premium Packing Solutions.

From separating liquids and gases with Knitted Mesh, to adding surface area for mass transfer with Packing Solutions and mist elimination through our Demister Pads, our products check off all the boxes within Oil and Gas columns.

## BREWING AND DISTILLATION

Our Knitted Mesh products offer efficient liquid-gas filtration to support all your Brewing and Distilling needs. With Copper Mesh to disinfect and purify spirits and Steel mesh to help turn malt into the beer you're looking for, our products consistently perform in this industry.

Undesirable flavors and unwanted compounds are eliminated by the superior filtration performance of our Knitted Mesh, ensuring the desired clarity, shelf life and consistency of your favorite drinks.

## CONSTRUCTION

The Construction Industry requires durable products that produce permanent repairs and solutions. Our line of Welding Wire is manufactured to handle the demands of any project, with a variety of alloy options fit for different welding techniques.

A good weld ensures safety and durability that can handle harsh conditions. Use our Welding resources on our website such as our Recommended Welding Procedures Page to choose the right material and technique for your next project.

## AIR POLLUTION CONTROL

At CWI, we are proud to serve industries that promote sustainability and environmental protection. Our Tech-Mesh™ products offer the filtration performance required to reduce air pollution.

Harmful pollutants and liquid droplets are removed from gas streams by our Custom Demister Pads, helping to control particulate matter and liquid mist emissions into the air in industrial processes.



# CWI TECH-MESH™

Calgary, AB (CA)  
Houston, TX (USA)

Central Wire Industries Tech-Mesh™ is knitted on state-of-the-art equipment under strict quality control processes to maximize separation efficiency and minimize pressure drop. Our Knitted Wire Mesh is an efficient, economical, and reliable product for mist elimination of liquids in oil refinery, chemical processing, and a wide range of other applications. All of our core products are produced in-house, and our finished mist eliminators are manufactured from domestic materials in our Houston, Texas and Calgary, Alberta locations. We offer a wide range of alloys beyond traditional 300 series stainless steel, including but not limited to grades like Alloy 625, 825 and many others. Whether you need Monel® 400 bulk mesh, or a custom Nickel 200 Demister Pad, our Knitted Wire Mesh products are always manufactured according to our customers' unique specifications, to offer superior performance no matter your project needs.

## APPLICATIONS

- Mist elimination
- Chemical processing
- Filtration

## SHAPES

- Round
- Rectangular
- Custom

## STAINLESS STEEL ALLOYS

- 304 Stainless Steel
- 304L Stainless Steel
- 316 Stainless Steel
- 316L Stainless Steel
- 317L Stainless Steel
- 321 Stainless Steel
- 347 Stainless Steel
- 2205 Stainless Steel

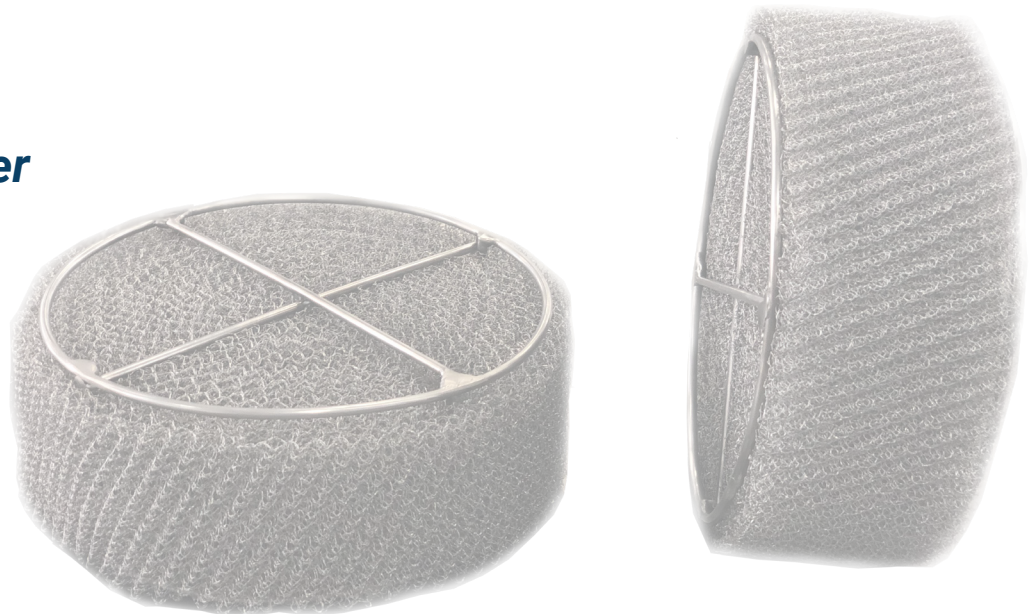
## SPECIALTY ALLOYS

- Monel® 400
- Alloy 20Cb3
- Nickel 200

## COPPER ALLOYS

- C101
- C102
- C110

***Produced to order***



# STRUCTURED & RANDOM PACKING

---

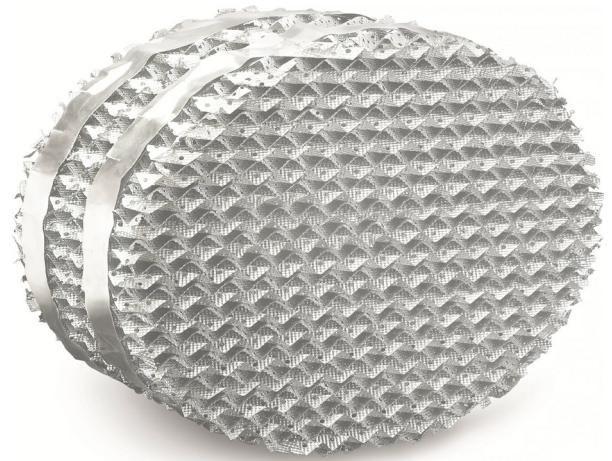
*Premium Packing Solutions engineered for superior performance in mass transfer applications, offering optimal pressure drop and efficiency, as well as durability.*

## STRUCTURED PACKING

Our structured packing solutions are engineered for superior performance, offering optimal pressure drop and efficiency characteristics. Ideal for distillation processes, these packings ensure excellent liquid and vapor distribution, which is crucial for high-capacity and high-purity applications.

### Key Features:

- High surface area for improved mass transfer
- Reduced pressure drops across the column
- Enhanced separation efficiency

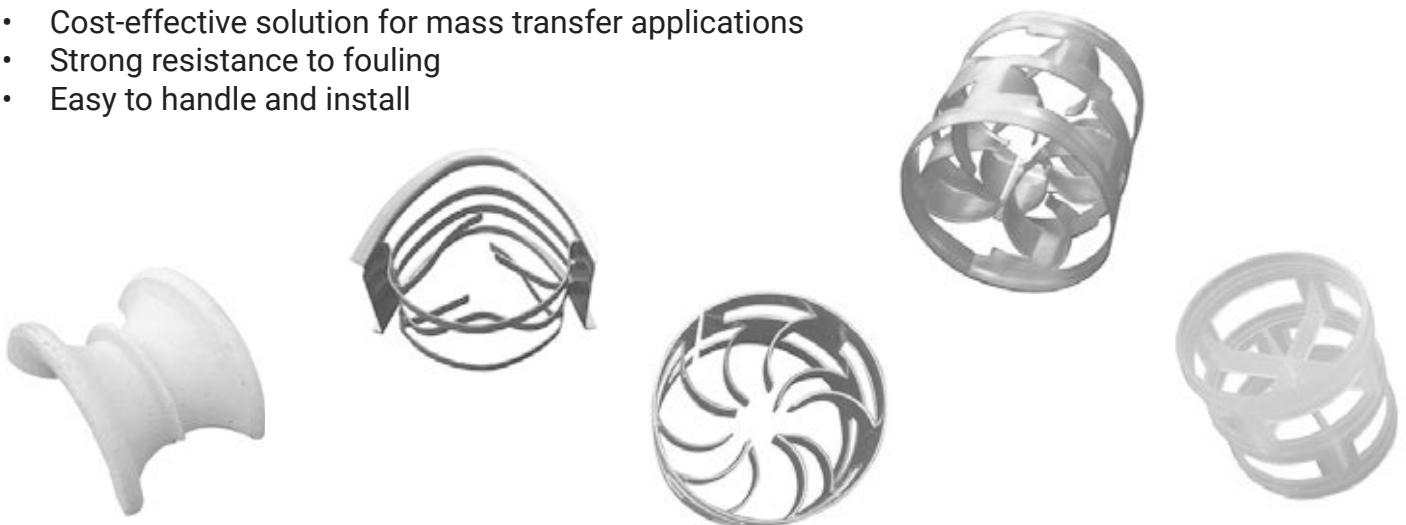


## RANDOM PACKING

Random packing is your go-to option for versatile, robust applications where durability and cost-effectiveness are key. These packings are suitable for a wide range of applications, offering flexibility and reliable performance under various operational conditions.

### Key Features:

- Cost-effective solution for mass transfer applications
- Strong resistance to fouling
- Easy to handle and install



# CWI GEN<sup>4</sup> WELDING

Perth, ON (CA)  
Calgary, AB (CA)  
Houston, TX (USA)  
Union, IL (USA)

Our evolutionary CWI Generation4™ specialty alloy Welding Wire products are manufactured with the highest quality raw materials including; stainless, nickel, cobalt and copper. Our products fulfill the specific, filler needs of many technical processes, including SAW, TIG, and MIG. All welding products are supplied with a certificate of conformance stating physical and mechanical properties, including alloy chemistry. We produce high-quality Welding Wire that burns cleanly and smoothly. Our knowledgeable team will work with you to find the perfect product for your project every time. With distribution from our Houston, Texas and Union, Illinois locations in the USA, and Calgary, Alberta and Perth, Ontario locations in Canada, lead times are short allowing for quicker repairs.

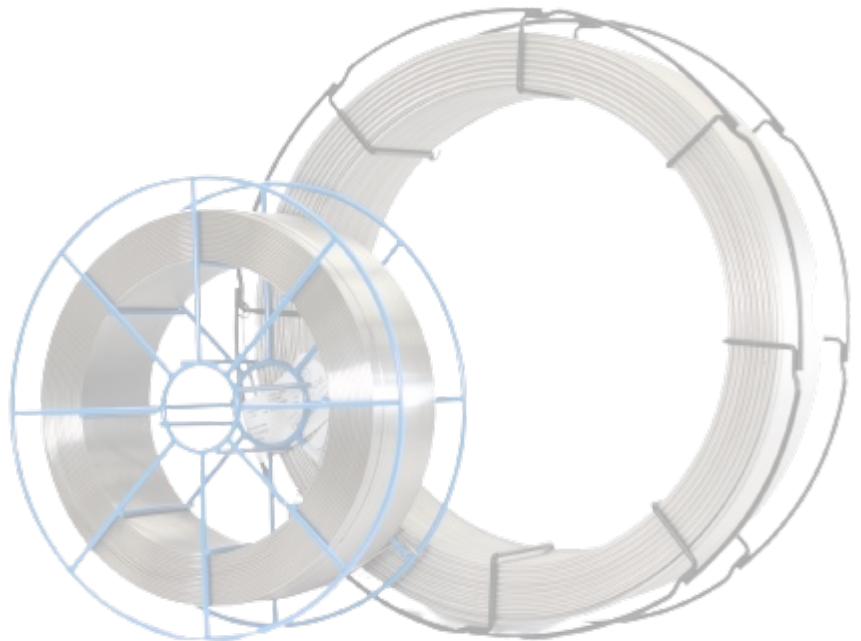
## PACKAGING OPTIONS

- Reels
- Spools
- Drums/Drum Packs
- Tubes

## WELDING TYPES

- Tungsten Inert Gas (TIG) Welding
- Metal Inert Gas (MIG) Welding
- Submerged Arc (SAW) Welding

***Our welding wire is manufactured in our ISO 9001:2015 certified facilities in the U.S., Canada, and the UK.***



**CWI**  
GROUP OF COMPANIES  
**GEN4 WELDING**



# ALLOYS

## STAINLESS STEEL ALLOYS

- GEN 218
- GEN 307 – 18 8 Mn
- GEN 308/308H – ER308/308H
- GEN 308/308L – ER308/308L
- GEN 308LSi – ER308LSi
- GEN 309/309L – ER309/309L
- GEN 309LSi – ER309LSi
- GEN 309LMo
- GEN 310 – ER310
- GEN 312 – ER312
- GEN 316/316L – ER316/316L
- GEN 316LSi – ER316LSi
- GEN 317L – ER317L
- GEN 320LR – ER320LR
- GEN 330 – ER330
- GEN 347 – ER347
- GEN 385 (904L) – ER385
- GEN 409Nb – ER409Nb
- GEN 410 – ER410
- GEN 410NiMo – ER410NiMo
- GEN 420 – ER420
- GEN 430 – ER430
- GEN 430NLb – ER430LNb
- GEN 630 (17-4PH) – ER630
- GEN 2209 (Duplex Grade) – ER2209
- GEN 2594 (Super Duplex Grade)
- GEN 209Mod

## NICKEL ALLOYS

- GEN 55
- GEN 99 – ERNiCl
- GEN 208 – ERNi-1
- GEN 276 – ERNiCrMo-4
- GEN 413 – ERCuNi
- GEN 418 – ERNiCu-7
- GEN 606 – ERNiCr-3
- GEN 617 – ERNiCrCoMo-1
- GEN 622 – ERNiCrMo-10
- GEN 625
- 625LHIW – ERNiCrMo-3
- GEN 686
- GEN 718 – ERNiFeCr-2
- GEN 825 – ERNiFeCr-1

## COPPER ALLOYS

- Deoxidized Copper (C 189) ERCu
- Silicon Bronze (C656) – ERCuSi-A

***Available to ship from stock***



# CWI

GROUP OF COMPANIES

## CWITECH-MESH™

[www.cwitech-mesh.com](http://www.cwitech-mesh.com)

## CWI GEN<sup>4</sup> WELDING

[www.centralwire.com/products/welding-wire](http://www.centralwire.com/products/welding-wire)

**CALGARY, ALBERTA (CA)**

162-5255 McCall Way NE

Calgary, AB T2E 7J5

Canada

**HOUSTON, TX (USA)**

18430 Kieth Harrow Blvd,

Houston, TX 77084

United States



[www.centralwire.com](http://www.centralwire.com) | [sales@centralwire.com](mailto:sales@centralwire.com) | 1-800-325-5861